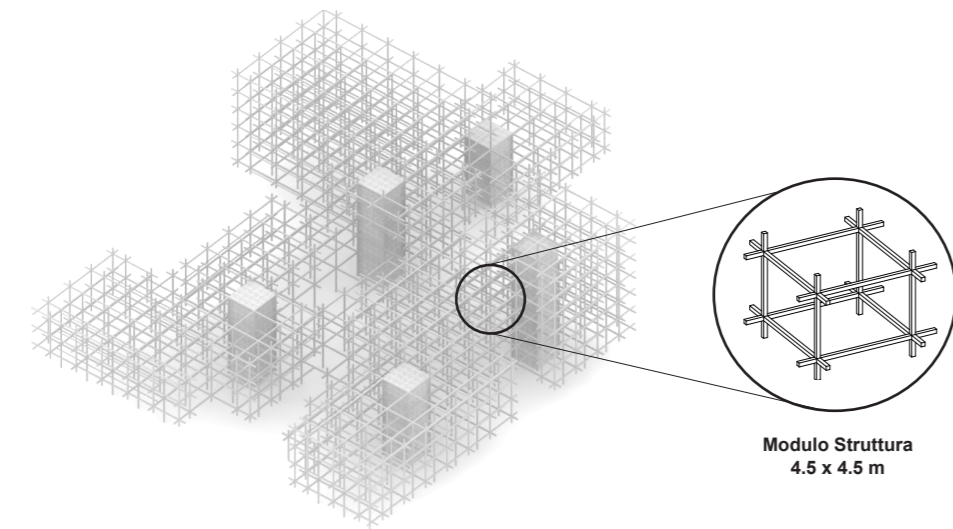
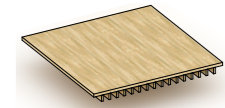


ABACO DEGLI ELEMENTI COSTRUTTIVI PREFABBRICATI

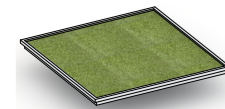


**Modulo Struttura
4.5 x 4.5 m**

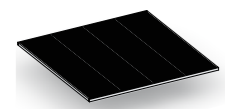
ELEMENTI SOLAIO



solaio in legno con struttura in lamellare di abete

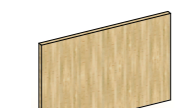


solaio di copertura per tetto giardino



solaio per terrazze esterne con grigliato in acciaio

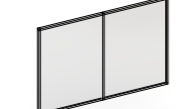
ELEMENTI PARETE



parete in legno a telaio per tamponatura esterna



parete in legno a telaio con finestra per alloggi



finestra per servizi comuni

ELEMENTI ACCESSORI



pannello brise soleil in lamiera di acciaio stirata

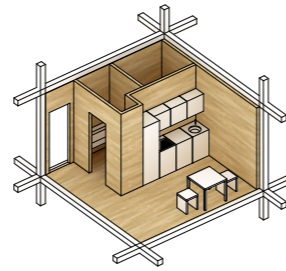


elemento fioriera



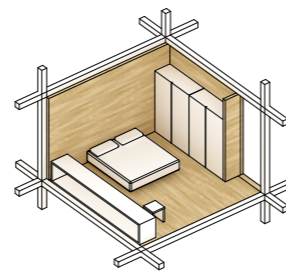
elemento parapetto

Moduli abitativi base



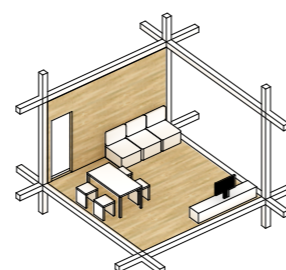
A

MODULO SERVIZI



B

MODULO CAMERA/STUDIO

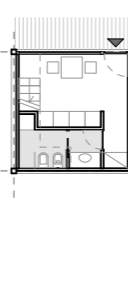
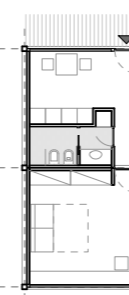


C

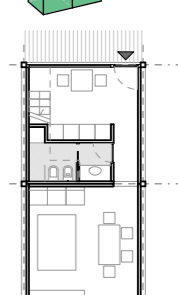
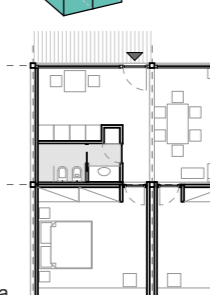
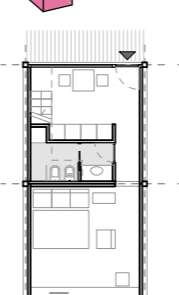
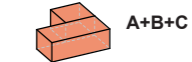
MODULO OPEN SPACE

ABACO DELLE TIPOLOGIE ABITATIVE

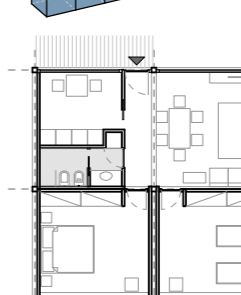
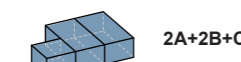
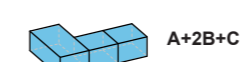
36 MQ
single / studenti / lavoratori fuori sede



54 MQ
giovani coppie / anziani /



72 MQ
coppie con figli / coppia con anziano a carico / doppia coppia



108 MQ
famiglia con anziano a carico / studenti / lavoratori

Aggregati di tipologie

AGGREGATO A
spazio comune interno all'abitazione



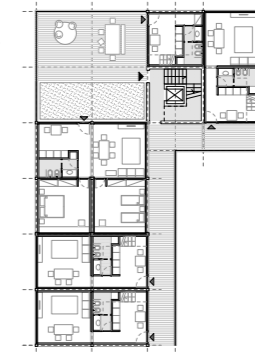
spazio privato condiviso



AGGREGATO B
spazio comune esterno all'abitazione



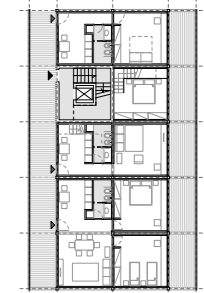
spazio semi privato



AGGREGATO C
balconi individuali



spazio privato



VISTA DI UN ALLOGGIO COLLETTIVO