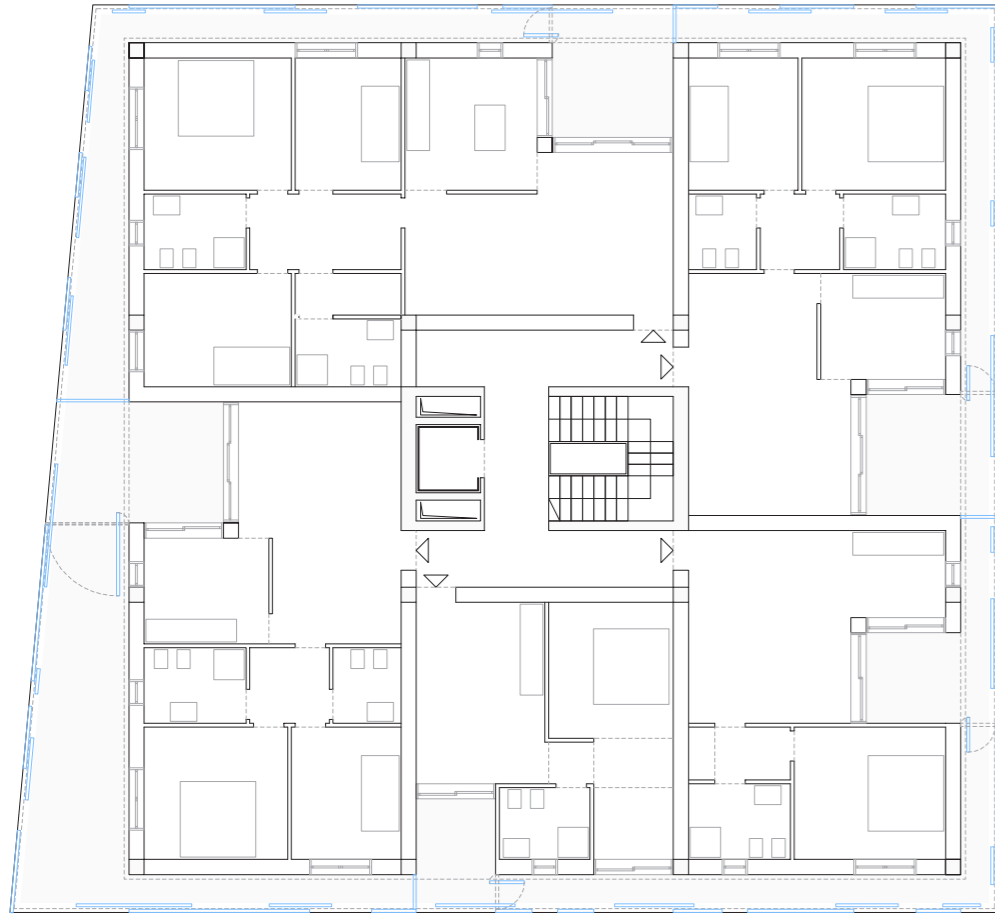
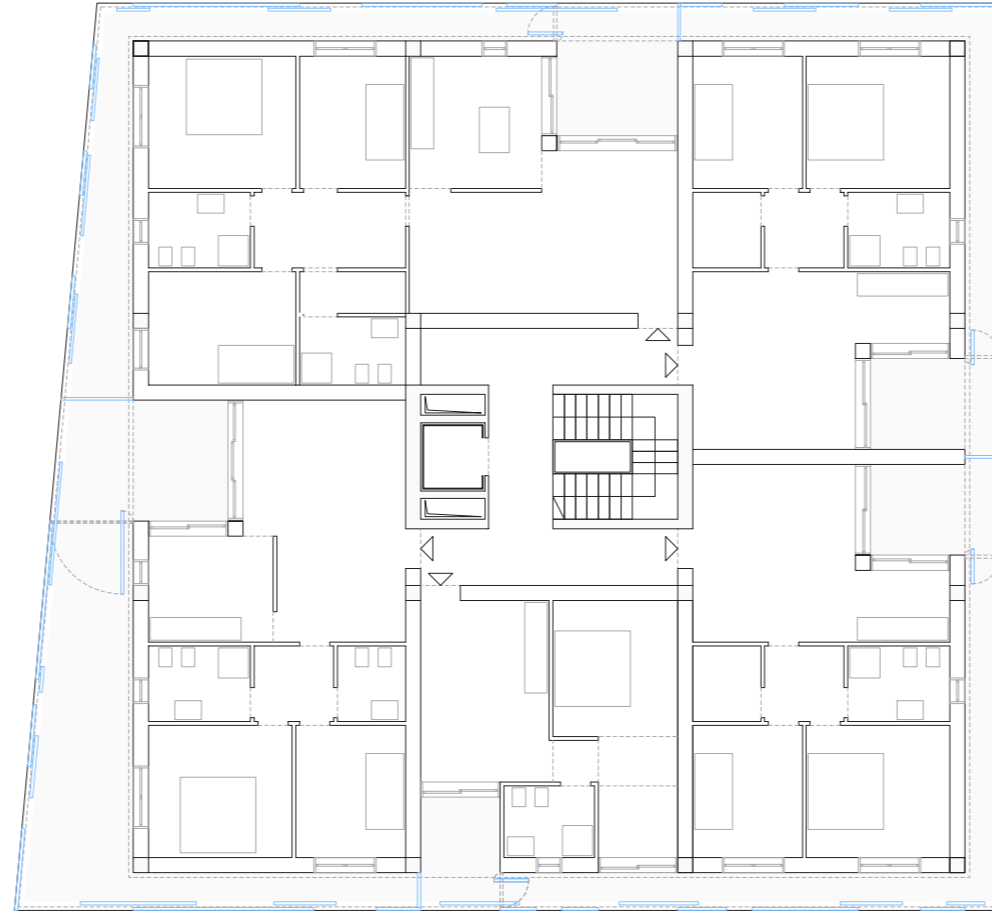


distribuzione piano tipo A - 1:200



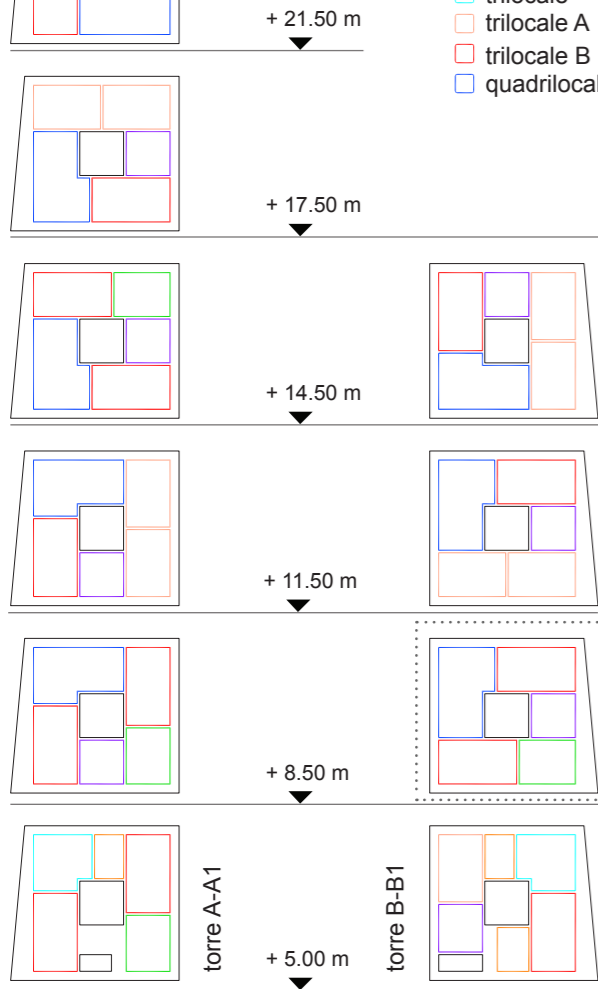
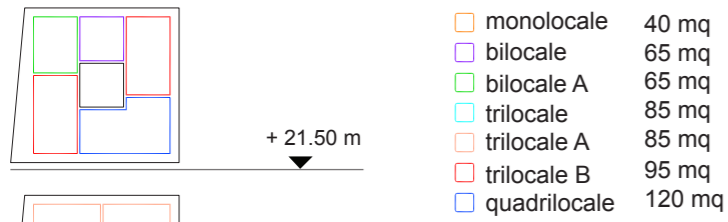
distribuzione piano tipo B - 1:200



distribuzione piano tipo C - 1:200



schema tipologie edilizie



	torre A-A1	torre B-B1	totale	%
monocale	02	04	6	6%
bilocale	14	11	25	25%
trilocale	12	11	23	23%
trilocale + K	20	10	30	30%
quadrilocale	10	06	16	16%
totale app.			100	100%

edilizia residenziale sociale

rotazione e flessibilità interna delle tipologie nei piani

